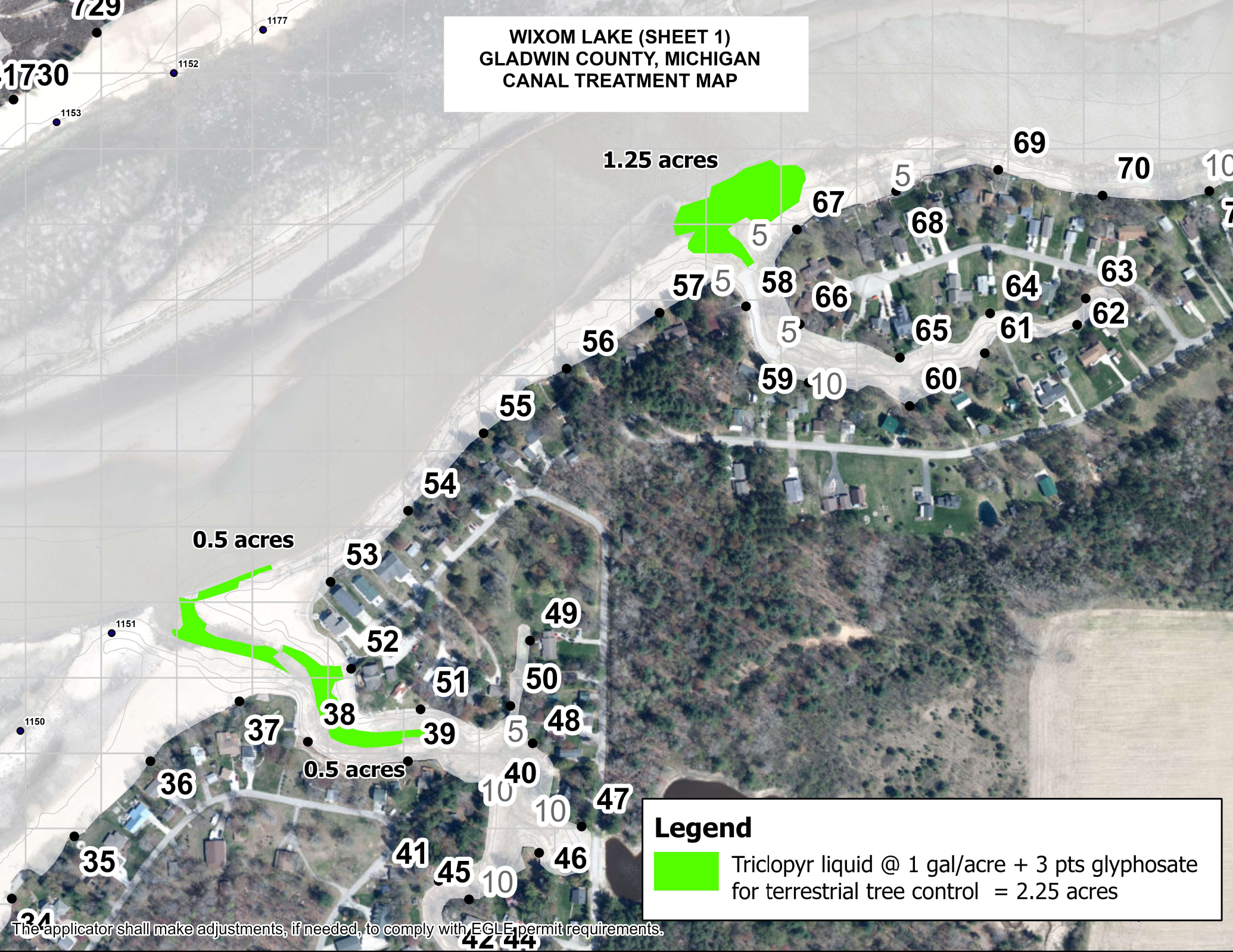


**WIXOM LAKE (SHEET 1)  
GLADWIN COUNTY, MICHIGAN  
CANAL TREATMENT MAP**



1.25 acres

0.5 acres

0.5 acres

**Legend**



Triclopyr liquid @ 1 gal/acre + 3 pts glyphosate  
for terrestrial tree control = 2.25 acres


The applicator shall make adjustments, if needed, to comply with EGLE permit requirements.

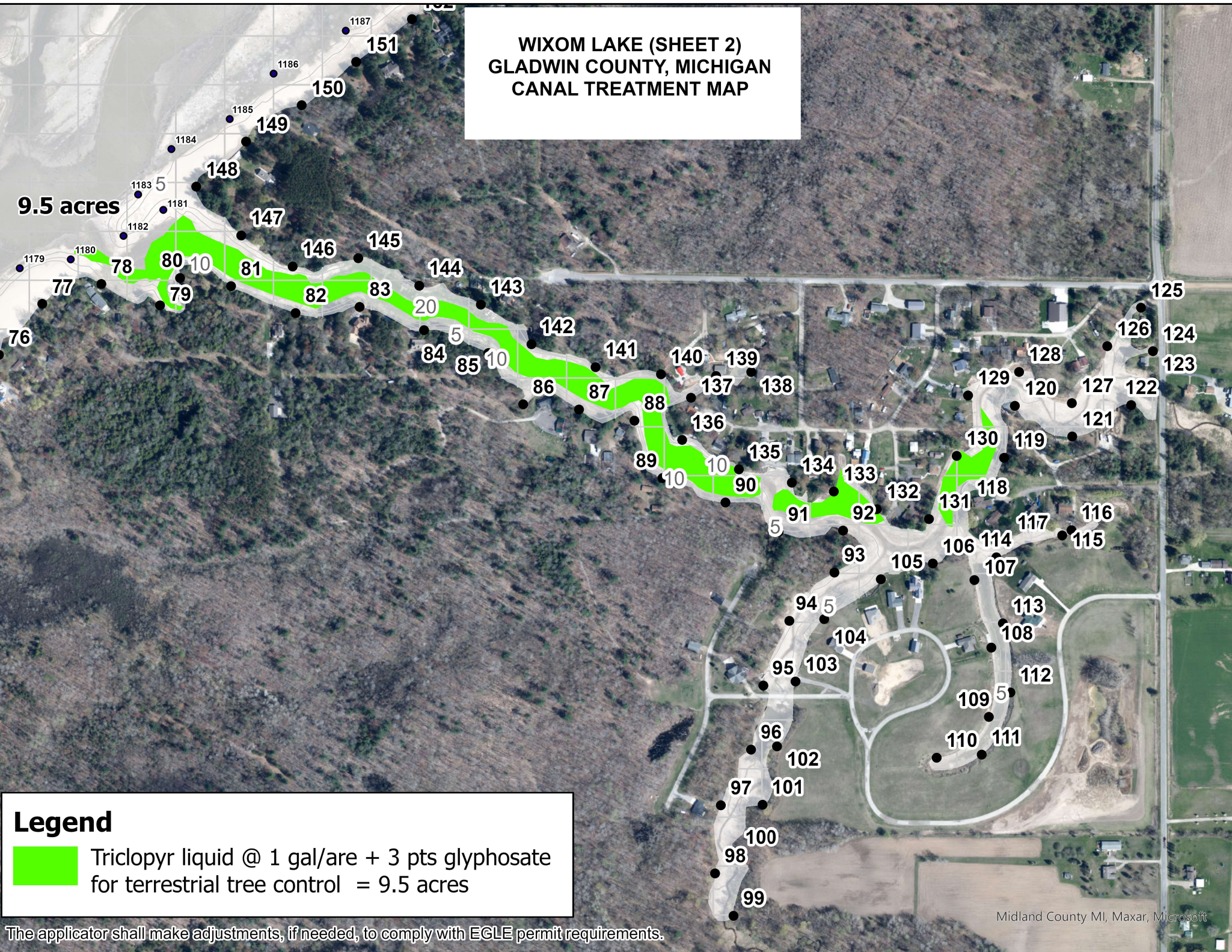


**WIXOM LAKE (SHEET 2)  
GLADWIN COUNTY, MICHIGAN  
CANAL TREATMENT MAP**

**9.5 acres**

**Legend**

 Triclopyr liquid @ 1 gal/are + 3 pts glyphosate  
for terrestrial tree control = 9.5 acres



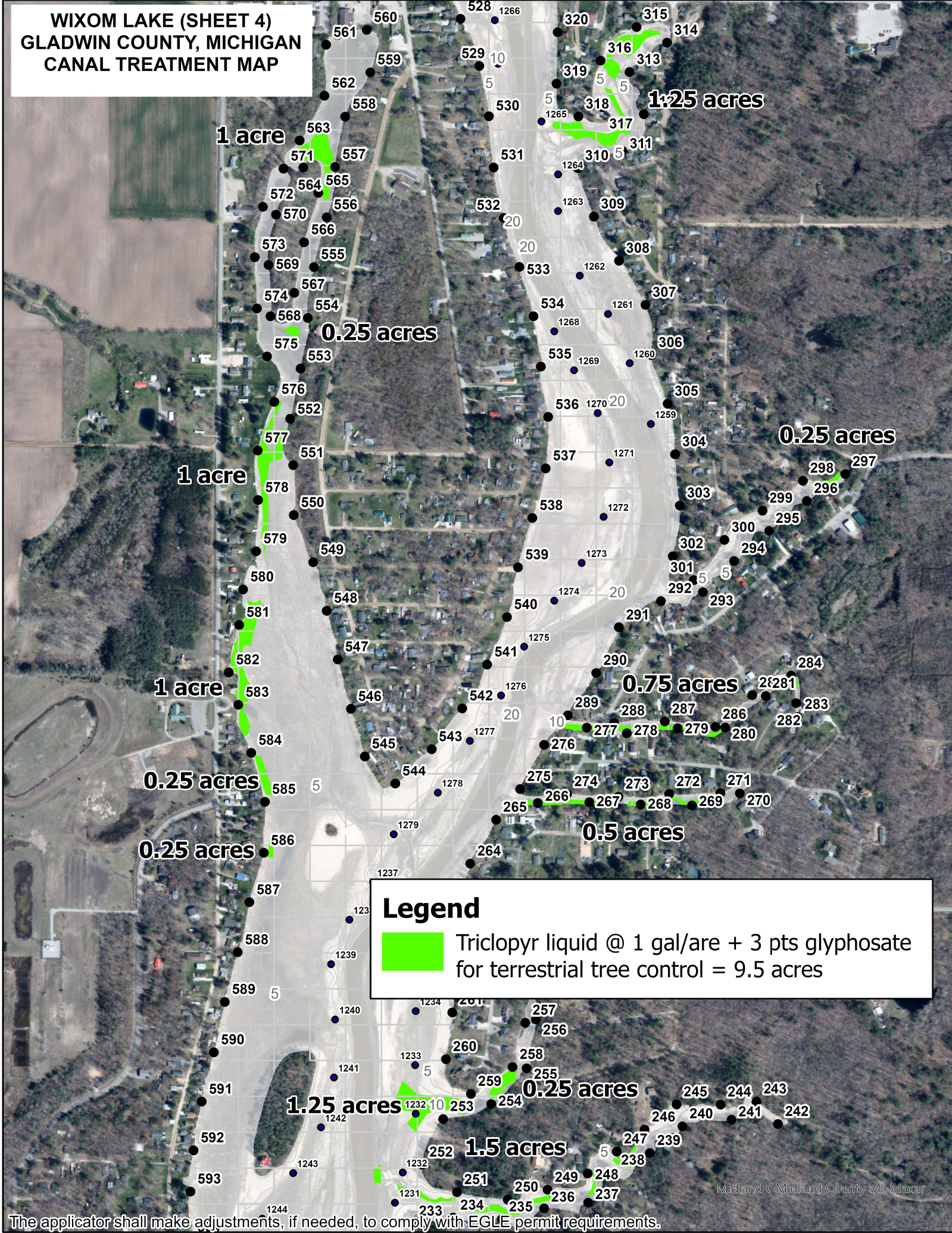
The applicator shall make adjustments, if needed, to comply with EGLE permit requirements.








**WIXOM LAKE (SHEET 4)  
GLADWIN COUNTY, MICHIGAN  
CANAL TREATMENT MAP**



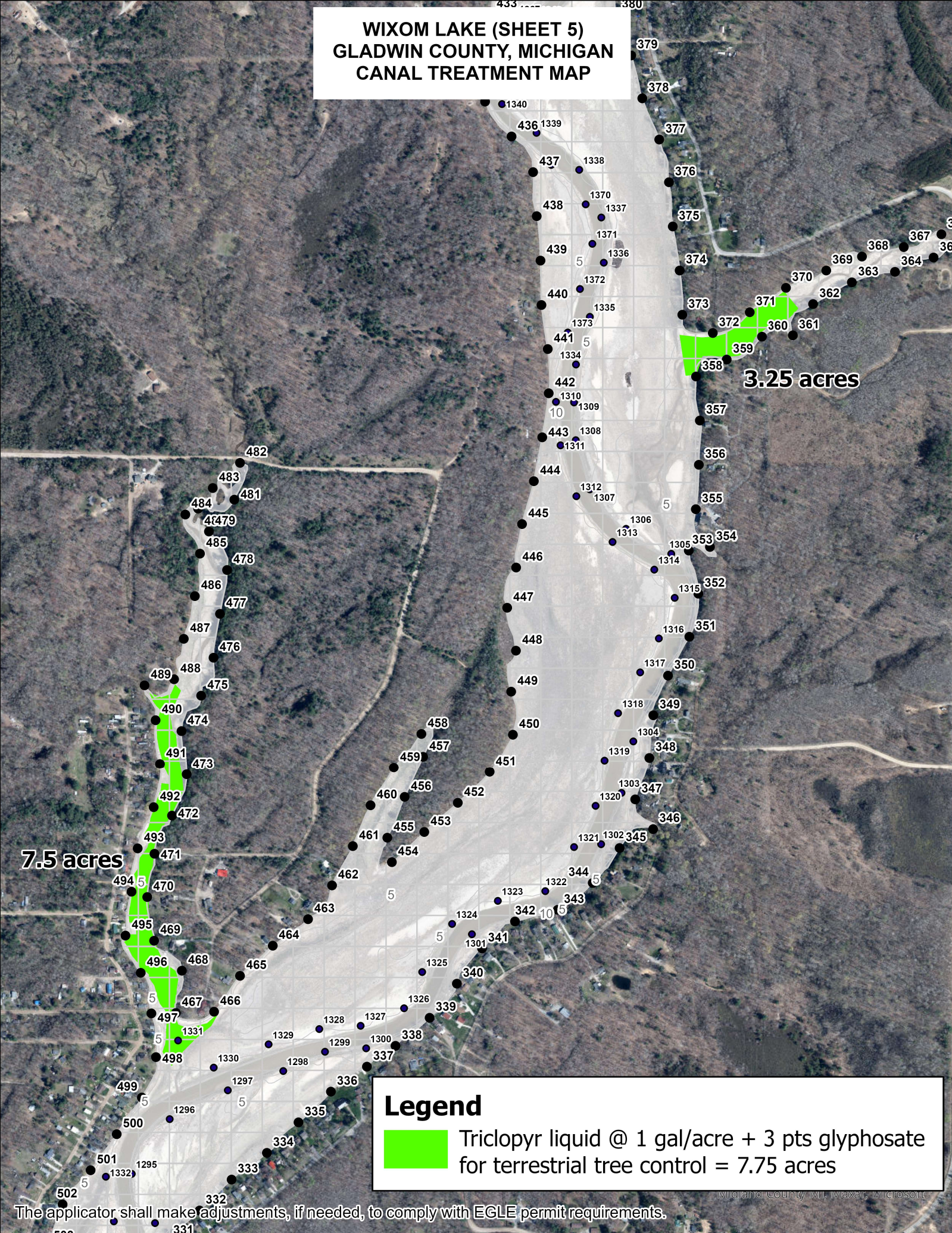
**Legend**

 Triclopyr liquid @ 1 gal/are + 3 pts glyphosate for terrestrial tree control = 9.5 acres

The applicator shall make adjustments, if needed, to comply with EGLE permit requirements.



WIXOM LAKE (SHEET 5)  
GLADWIN COUNTY, MICHIGAN  
CANAL TREATMENT MAP



3.25 acres

7.5 acres

**Legend**



Triclopyr liquid @ 1 gal/acre + 3 pts glyphosate  
for terrestrial tree control = 7.75 acres

The applicator shall make adjustments, if needed, to comply with EGLE permit requirements.




WIXOM LAKE (SHEET 6)  
GLADWIN COUNTY, MICHIGAN  
CANAL TREATMENT MAP

INLET



**Legend**



 Triclopyr liquid @ 1 gal/are + 3 pts glyphosate  
for terrestrial tree control = 1.5 acres

The applicator shall make adjustments, if needed, to comply with EGLE permit requirements.



**WIXOM LAKE (SHEET 7)  
GLADWIN COUNTY, MICHIGAN  
CANAL TREATMENT MAP**

**Legend**

-  Triclopyr liquid @ 1 gal/acre + 3 pts glyphosate for terrestrial tree control = 4.25 acres
-  Glyphosate for terrestrial vegetation control = 1.25 acres

